



## Rabbit anti Androgen Receptor (AR) Polyclonal Antibody

Alternative Name(s): androgen receptor

### Order Information

- **Description:** Androgen Receptor (AR)
- **Catalogue:** 600-480
- **Lot:** See label
- **Size:** 100ug/200ul
- **Host:** Rabbit
- **Clone:** nan
- **Application:** WB, ELISA
- **Reactivity:** Hu, Ms, Rt

### **ANTIGEN PREPARATION**

A synthetic peptide corresponding to N-term of human AR. This sequence is identical among human, rat, mouse, dog.

### **BACKGROUND**

The androgen receptor (AR), a member of nuclear receptor family, is essential for the growth of prostate cancer cells. The phosphorylation of AR is induced by growth factors and elevated in hormone-refractory prostate tumors. It's been reported the signal pathway of the PI3K/AKT, Src to be responsible for phosphorylation of AR at Ser213/210 and Ser81. The abnormal activation of AR is observed in many diseases, such as prostate cancer.

### **PURIFICATION**

The Rabbit IgG is purified by Epitope Affinity Purification

### **FORMULATION**

This affinity purified antibody is supplied in sterile Phosphatebuffered saline (pH7.2) containing antibody stabilizer

### **SPECIFICITY**

This antibody recognizes ~110 kDa of human AR protein. It also reacts with mouse and rat. The other species are not tested.

### **STORAGE**

The antibodies are stable for 24 months from date of receipt when stored at -20oC to -70oC. The antibodies can be stored at 2oC-8oC for three month without detectable loss of activity. Avoid repeated freezing-thawing cycles.

### **APPLICATIONS/SUGGESTED WORKING DILUTIONS\***

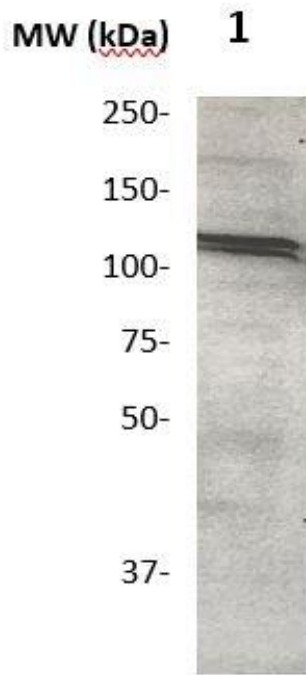
- Western Blot: 0.1-1 µg/ml
- ELISA: 0.01-0.1 µg/ml
- Immunoprecipitation: 2-5 µg/ml
- IHC: 2-10 µg/ml
- Flow cytometry: Not tested
- Molecular Weight: 110.0
- Positive Control: Kidney Tissue
- Cellular Location: Cell Membrane

\*Optimal dilutions should be determined by researchers for the specific applications.

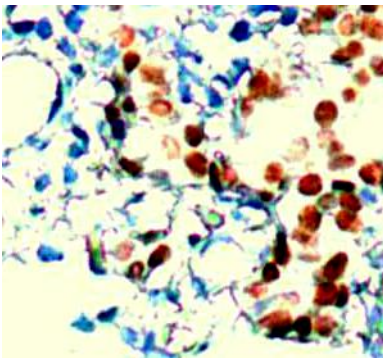
### **FOR RESEARCH USE ONLY.**

AbboMax, Inc 2528 Qume Drive, Suite 8, San Jose, California 95131, USA  
1 408-573-1898 (Tel). 1 408-573-1858 (Fax). [www.abbomax.com](http://www.abbomax.com) [info@abbomax.com](mailto:info@abbomax.com)

**DATA ATTACHMENTS**



Western Blot: The whole cell lysate derived from LNCaP were immunoblotted by Rabbit anti-AR (pSer210) (Cat#602-680) at 1:500. Observed a major immunoreactive band at molecular weight ~110 kDa.



Immunohistochemistry: Human prostate Carcinoma tissue (FFPE) stained with rabbit Anti-AR antibody (Cat# 600-480) at 1:100 for 10 min @ RT. Staining of formalin-fixed tissue requires boiling tissue sections in 10 mM Citrate Buffer, pH 6.0 for 10 min followed by cooling at RT for 20 min.

**REFERENCES**

**FOR RESEARCH USE ONLY.**